



Presidencia de la Nación

Jefatura de Gabinete de Ministros

Unidad Plan Belgrano

The development of the Argentine North across the Plan Belgrano

Plan Belgrano – Strategic Axes

The North is a part of our identity, it gave to us history and culture.
The country has a historical debt with this region.

SOCIAL, PRODUCTIVE plan and of INFRASTRUCTURE, one is going to work for the EQUALITY and the GROWTH of the ARGENTINE NORTH

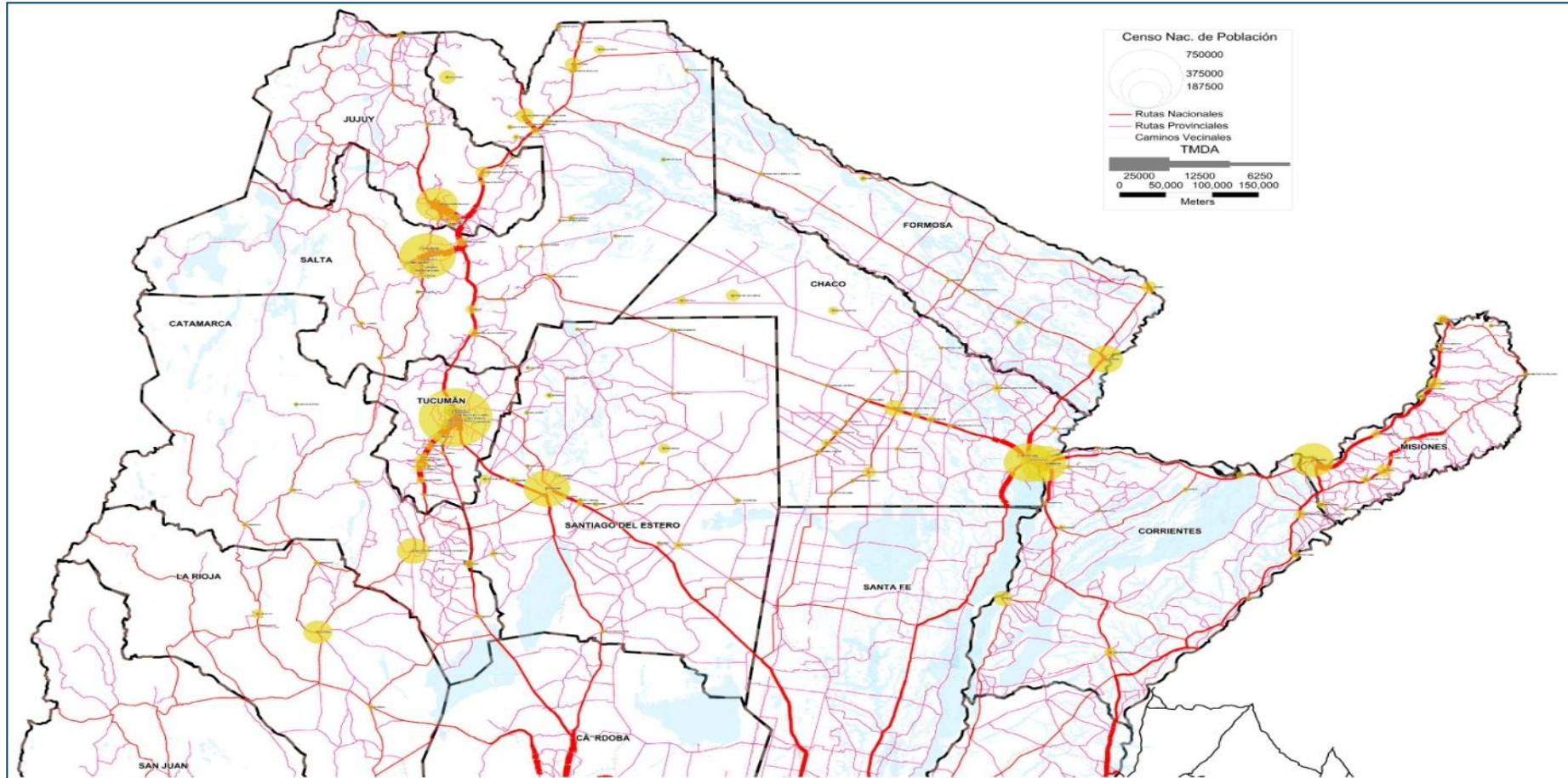
4 strategic axes:

- **Join the population**
Zero poverty - Equality of Opportunities
Infrastructure
- **Fight against the drug trafficking**

Structural inequalities of the Argentinian North

- **Heterogeneous region and with major relative delay that he understands to the provinces of** Salta, Jujuy, Tucumán, Santiago del Estero, Formosa, Chaco, Misiones, Corrientes, Catamarca y La Rioja.
- **8,6 million of inhabitants** (20% of the country).
- **Major concentration of poor homes of the country together with the Conurbano Bonaerense. Low relative levels of revenue for inhabitant and of employment that they deepen the inequality: rate of employment NEA, 35,1 %; NOA, 39,3 %; Buenos Aires Conurbano, 42,7 %; CABA, 50,9 %. Low depth of the financial system impedes the channeling of the saving towards the investment.**
- **Minor stock of the capital and physical infrastructure + asymmetries in the availability of transport lead to the highest logistic costs of the country.**
- **Productive - managerial limited and important local - provincial studding with few SMEs except in sectors that achieved competitive external insertion.**
- **Exporting basket dominated by low-ranking products of differentiation, linked to primary activities with scanty processing.**

Argentina's North



Argentina's North

Region NOA

La Rioja
Catamarca
Salta
Jujuy
Tucumán
Santiago

Population: 4.911.412
Surface 520.145 km²

Population: 8.591.291
Surface: 809.844 km²

Region NEA

Chaco
Formosa
Corrientes
Misiones

Population: 3.679.879
Surface: 289.699 km²

Competitions of the Plan Belgrano - Decree 435/2016

1. To attend the President of the Nation and the Chief of Office of The Secretaries in the development and coordination of the social, productive policies and of infrastructure that reduce the inequality between the region North and the rest of the country.
2. To supervise the fulfillment of the Aims of the Plan Belgrano, for which will have to need of the Secretaries, Secretaries and other civil servants of the Public national Administration the necessary information to carry out the summary, consolidation, analysis of the information and follow-up of the degree of execution of the policies implemented in the jurisdictions mentioned on the basis of established guidelines. **To deal with the priorización of the projects with external financing that they execute in the mentioned jurisdictions** To deal with the diffusion of the activities of the Executive national Power with the area of the mentioned jurisdictions.

Poverty Zero and Equal Opportunities

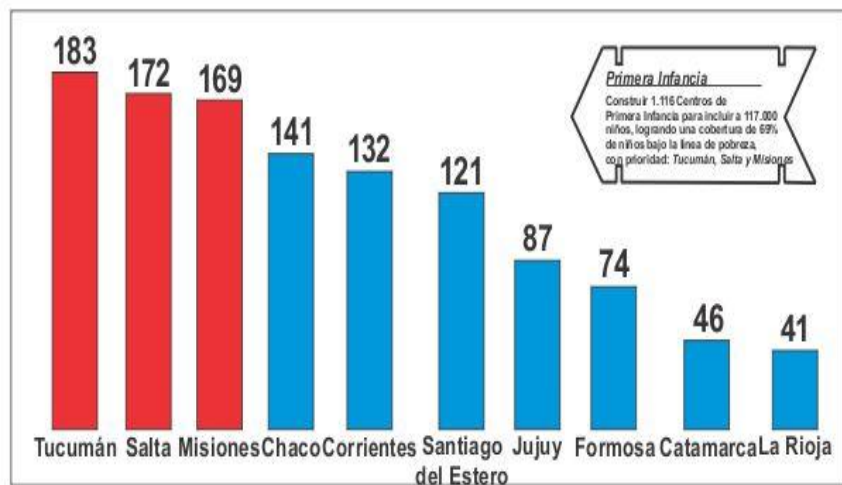
Poverty Zero and Equal Opportunities - Actions

- Rapid intervention in places where the poverty is extreme for decades.
- To incorporate 250.000 18-year-old minors into the coverage of the Universal Assignment for Son.
- To build **1.400 early childhood center**.
- **Pre-school coverage** for 3, 4 and 5-year-old children.
- **All the schools** with Internet Conecction
- To strengthen the Primary care of Health, with more Public Hospitals and more Doctors. **To eliminate Retentions and hobbles to the Exports.**
- **To strengthen the Regional Economies.**
- **The first Employment. Exemption of Contributions and Contributions for the first 60 months of the labor history of every person.**

Equal Opportunities – Social Protection

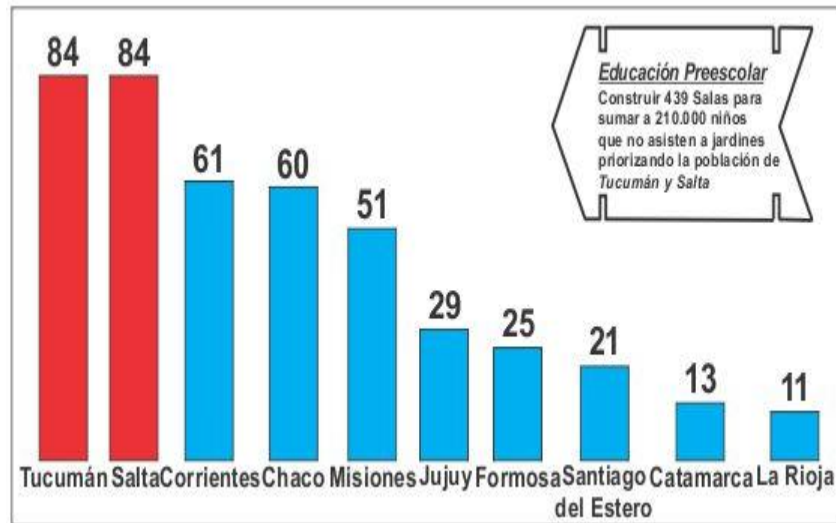
Present and Future

CREATION OF 1.116 NEW CENTERS OF THE EARLY CHILDHOOD



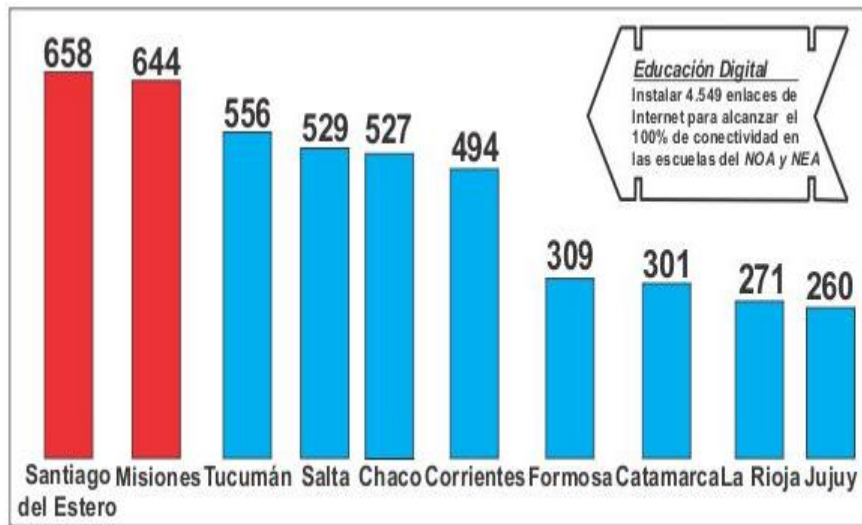
Equal Opportunities – School education as a priority

**CREATION OF 439
SCHOOLS FOR
CHILDREN
BETWEEN 3 AND
5 YEARS OLD**



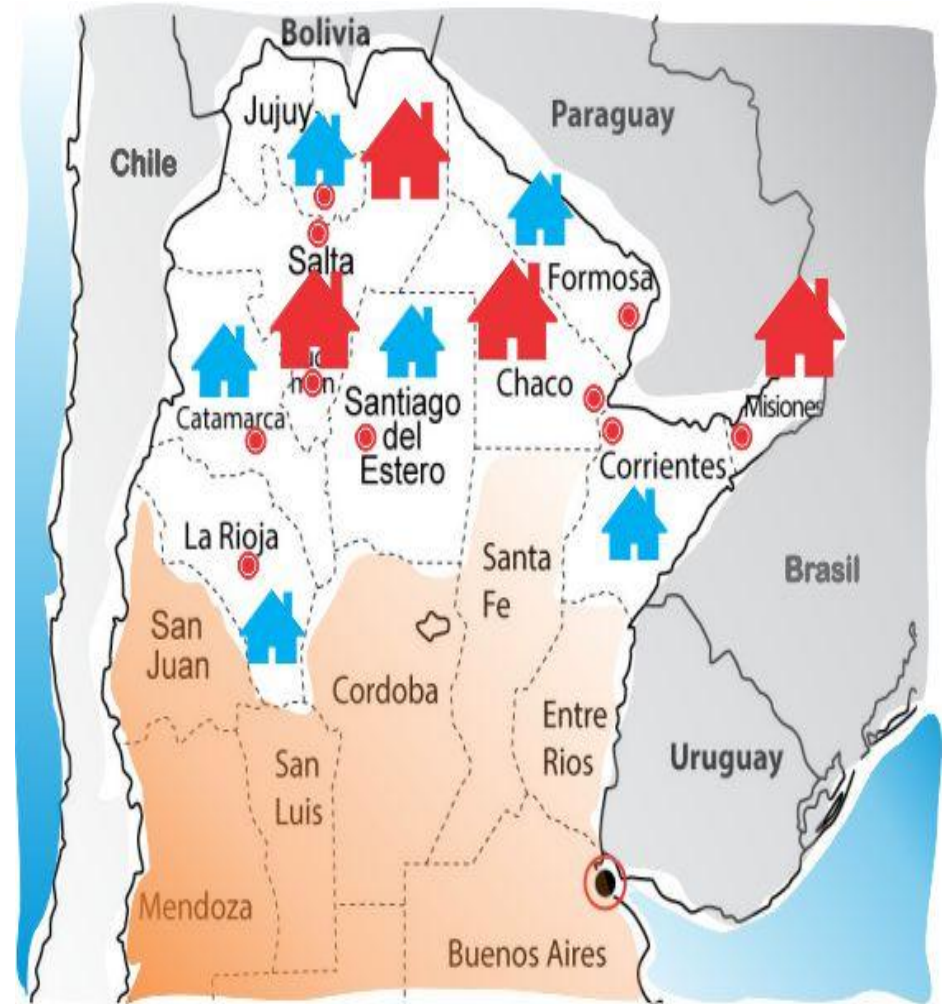
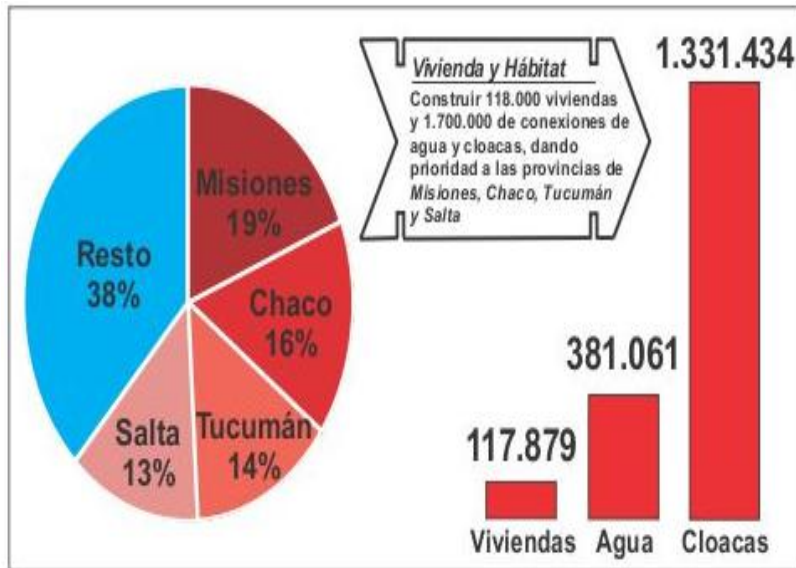
Equal Opportunities- Digital education as a priority

**Access to Internet
for the 100% of
schools in North
Argentina.**



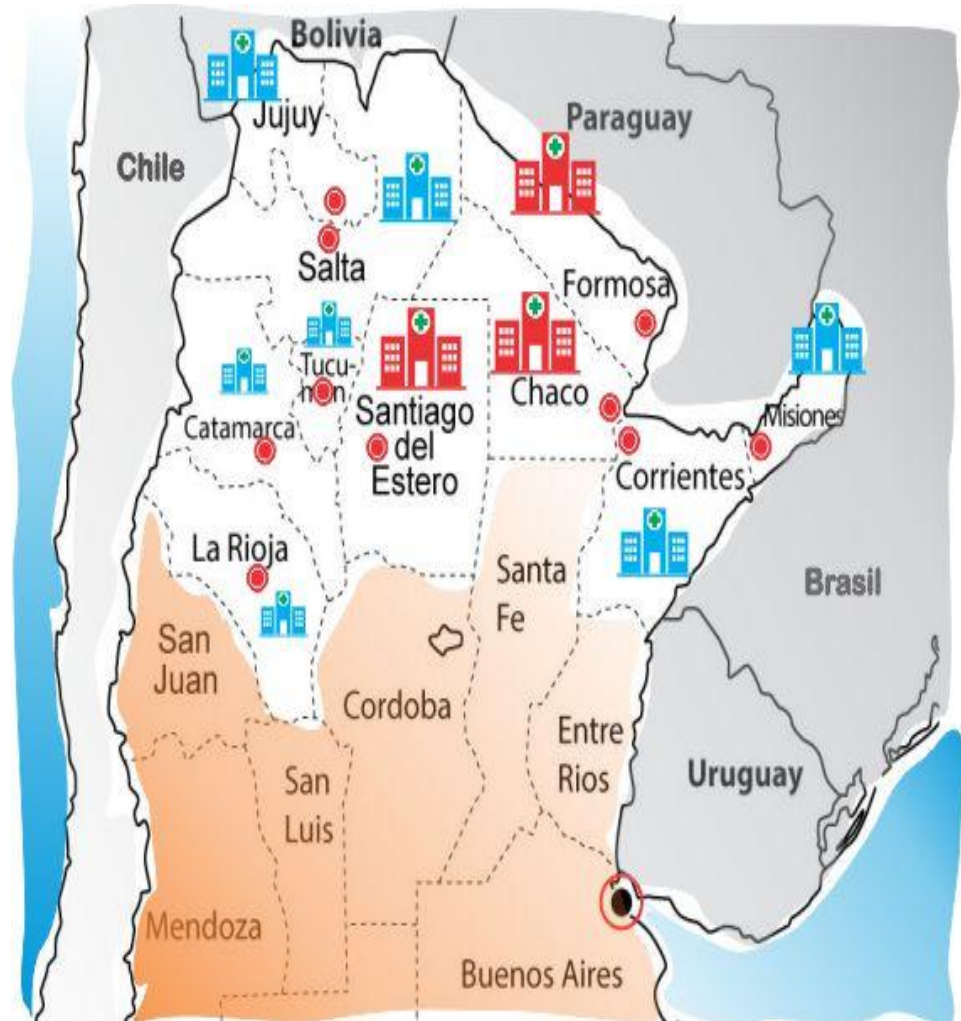
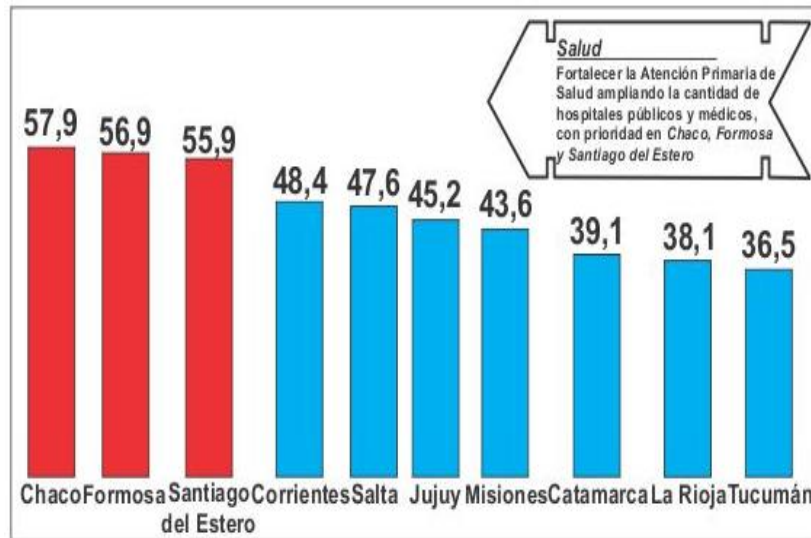
To develop a satisfactory life – Housing deigns, water and sewage

250.000 Solutions Housing
150.000 social Housings
100.000 Credits Subsidies
for rent



To strengthen the primary care of health - More public and medical hospitals

Polyclinical as link between Centers of Primary care (COPC) and Public Hospitals



To strengthen the regional economies

Specific measures for each of the regional economies: commercial international Negotiations and health for the citricultura; To improve the national bottom of the tobacco to help to the restructuring of the producers; Plan of development for the ranching; To support and to extend the Cotton Fund improving the distribution of his budget and the transparency; To promote the forest sector with investments environmentally sustainable. I promote to the sector tourism and other services of high added value.

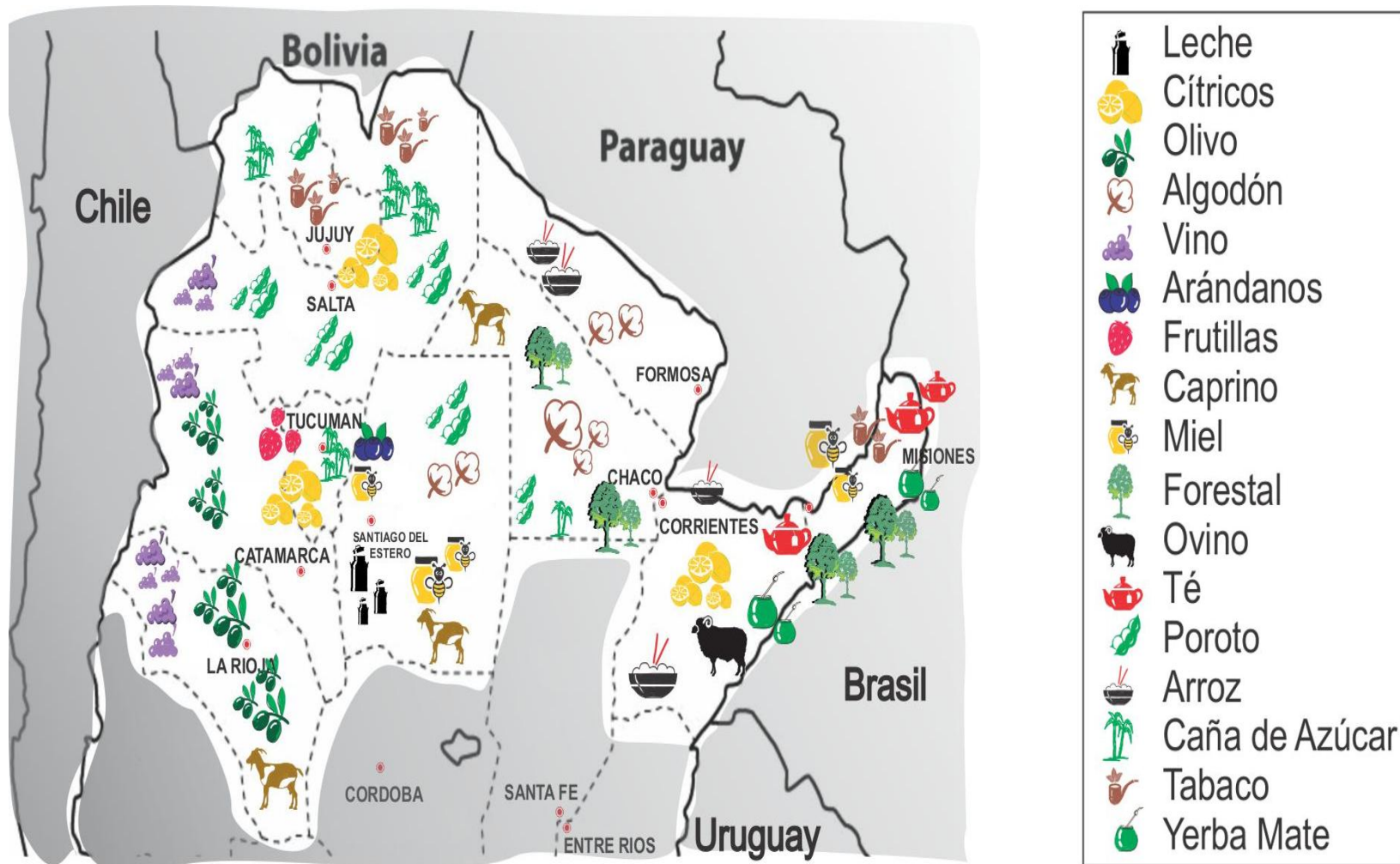
In the NOA, it is necessary to to change the look on the complex sucro alcoholero. It will be the new energetic goal of the Nation to incorporate gradually the major percentages of bioethanol into a new conception of biomass and renewable energies.

To strengthen the regional economies



	Leche		Forestal
	Cítricos		Ovino
	Olivo		Te
	Algodón		Poroto
	Vino		Arroz
	Frambuesas		Caña de azucar
	Frutillas		Tabaco
	Capino		Yerba Mate
	Miel		

To strengthen the regional economies

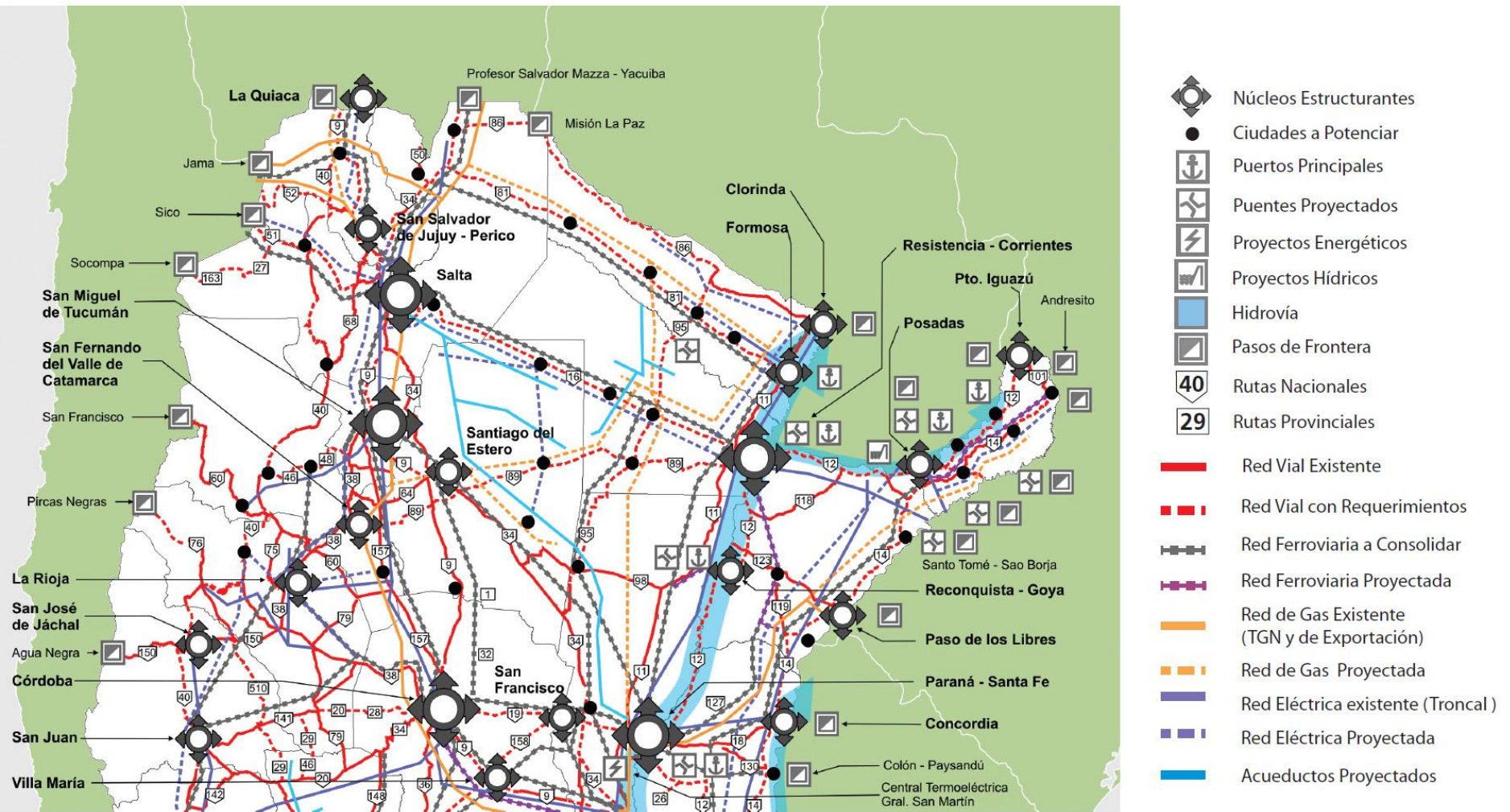


Infrastructure for the Economic Development

Plan Belgrano - Axes of planning of transport

- The different manners of transport in the region must join a System: " The set of fixed facilities (Stations, routes FFCC, Hidrovías, roads), entities of flow (vehicles or means) and systems of control that allow that you present and goods win the friction of the geographical space efficiently to effects of taking part opportunely in pre-established activities "
- The role of the condition in the planning will look for the intermodal complementarity before that the competition; to diminish the costs of interregional logistics, his connection with the rest of the Argentina and with bordering countries.
- The set of works and necessary equipments will adjust initially of minimizing costs and energy consumptions (Distances of balance).
- The implementation will be modular, for stages that will give priority to the recovery of the existing infrastructure.
- The new projects and improvements will be ordained for objective indicators of evaluation, from studies of traffic and transport.

Infraestructura for the mobility of loads Argentine North - Strategic Territorial Plan



Plan Belgrano - Investment projected in infrastructure of transport

Total investment USD
16.300 million



	Monto (Millones USD)
Road	10.500
Railroad	5.550
Airport	250
TOTAL	16.300

Infrastructure for the Economic Development - Road

Investment U\$S 10.500 millions - Aims:

To strengthen the integration across improvements in main axes N-S, And And Or reinforcing safety and extending capacity;

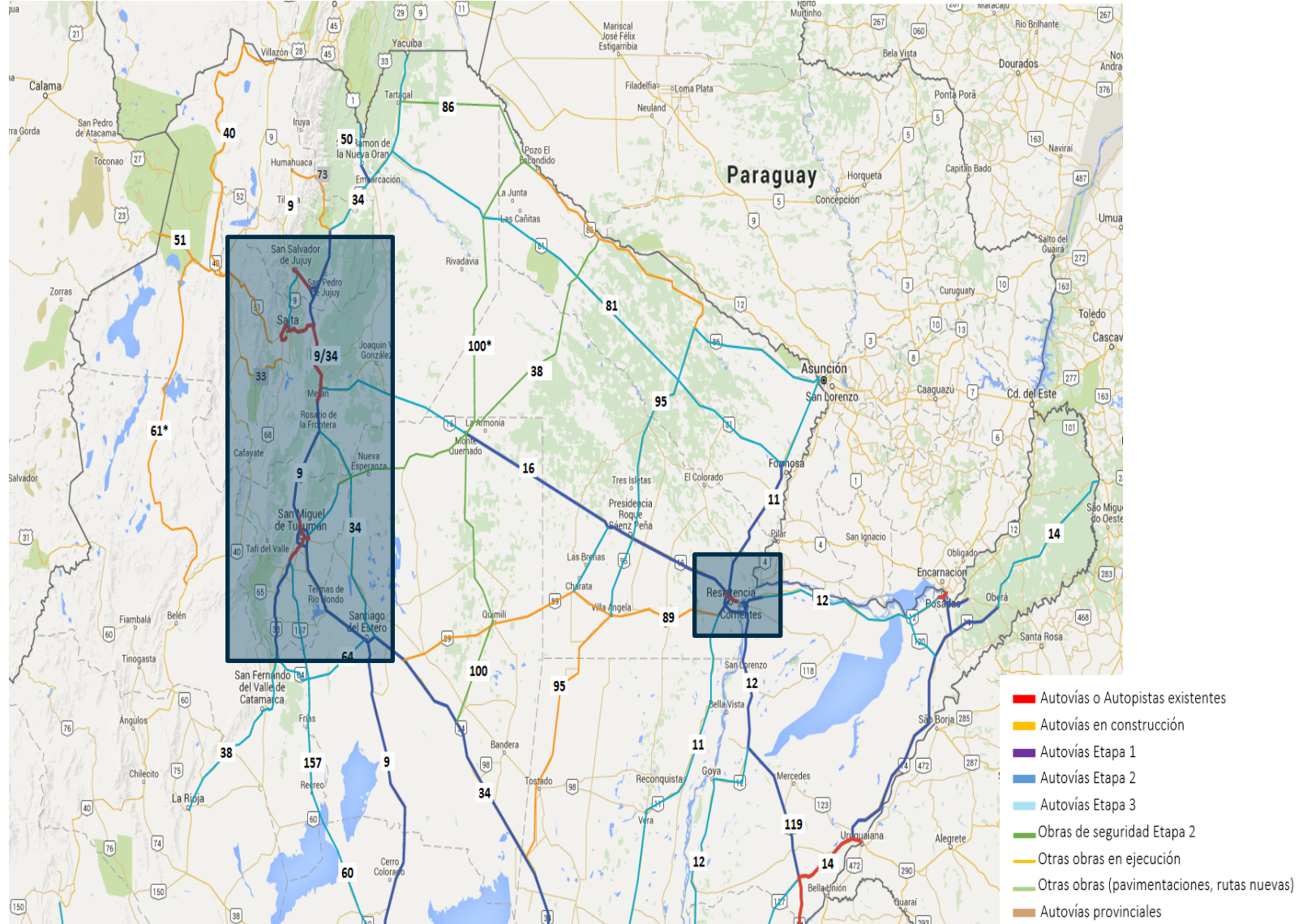
To improve the connectivity of principal urban centers with the interior of every region, and to improve accessibility to the small isolated populations;

To assure accessibility adapted in road national and provincial networks for all kinds of vehicle and any climatic condition;

To identify and to develop works to separate the local tránsitos and cities of the traffic flows assistant;

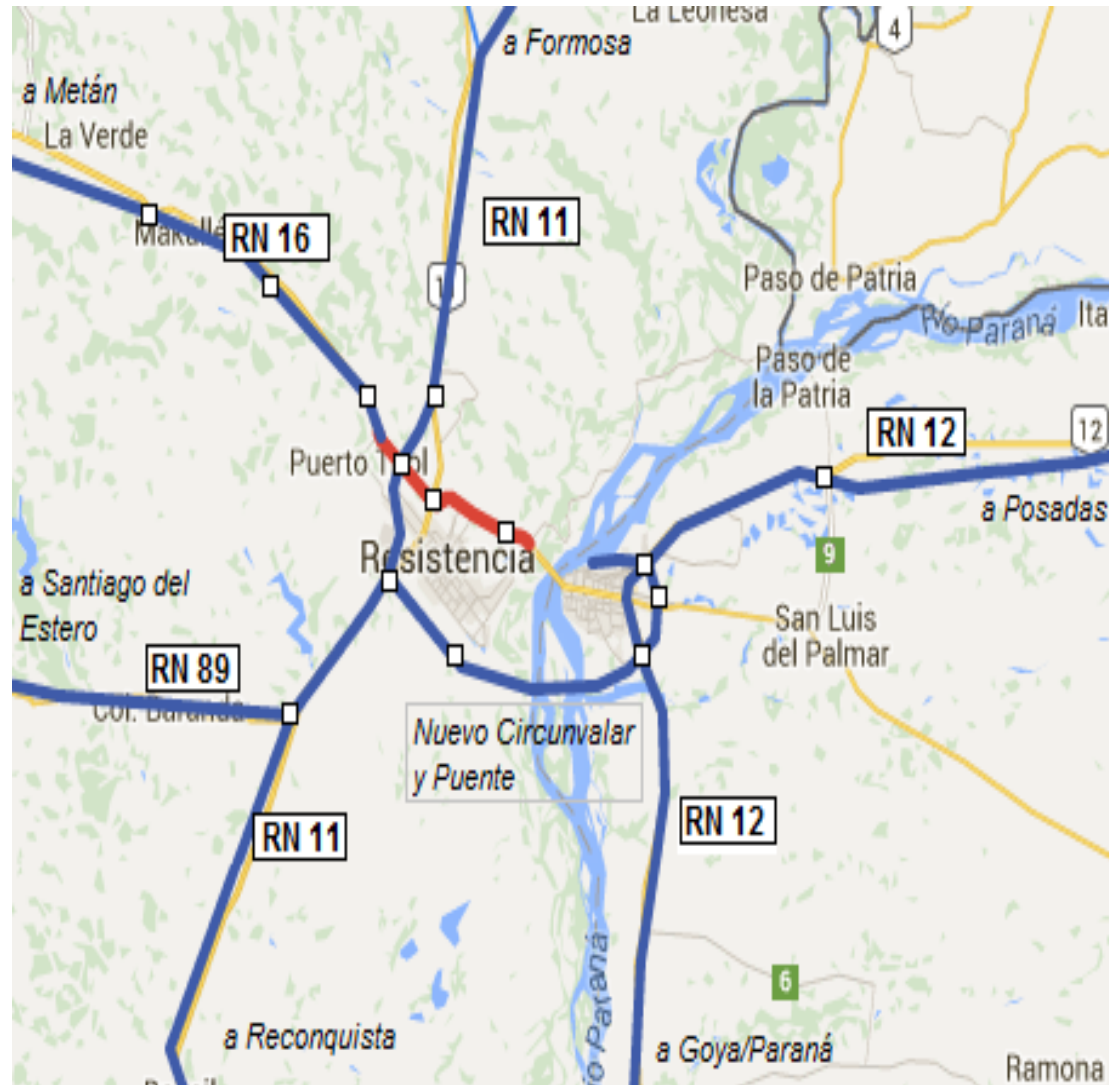
To eliminate the necks of bottle, improving the traffic and reducing the congestion in road key nodes.

Axes National Routes 9 and 34 / National Routes 11 and 12

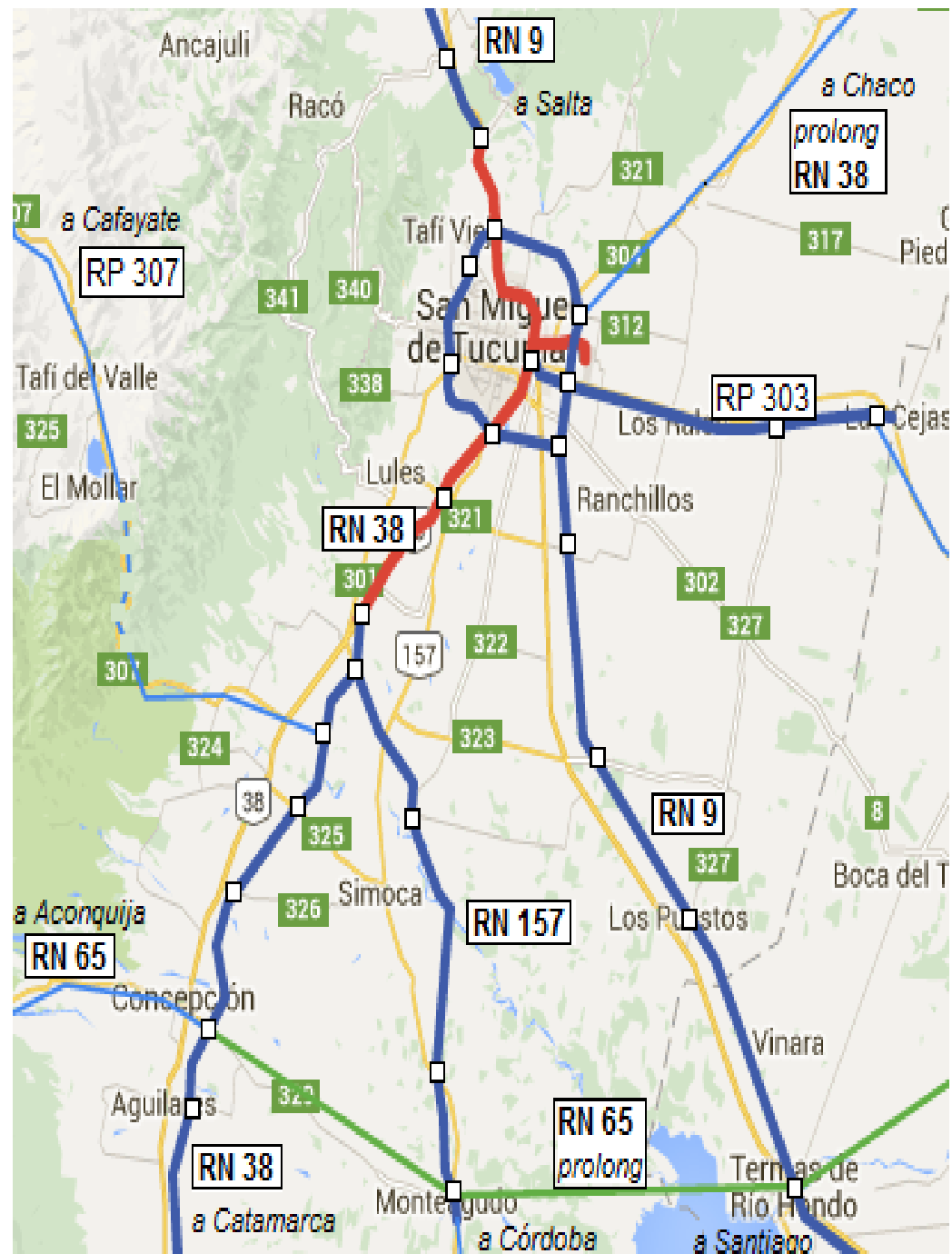


NEA: Connectivity Formosa - Chaco- Corrientes - Misiones

National Routes 11, 12, 16 and 89

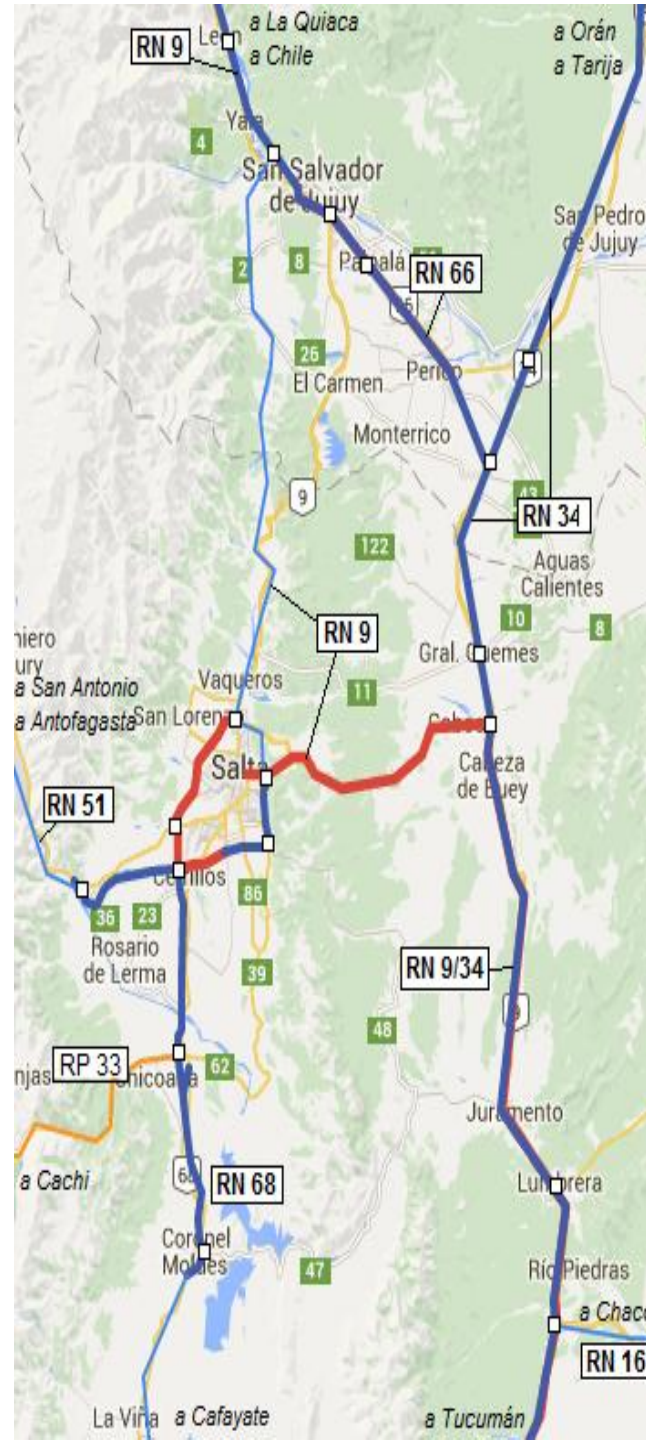


NOA: Tucumán San Miguel like regional central node

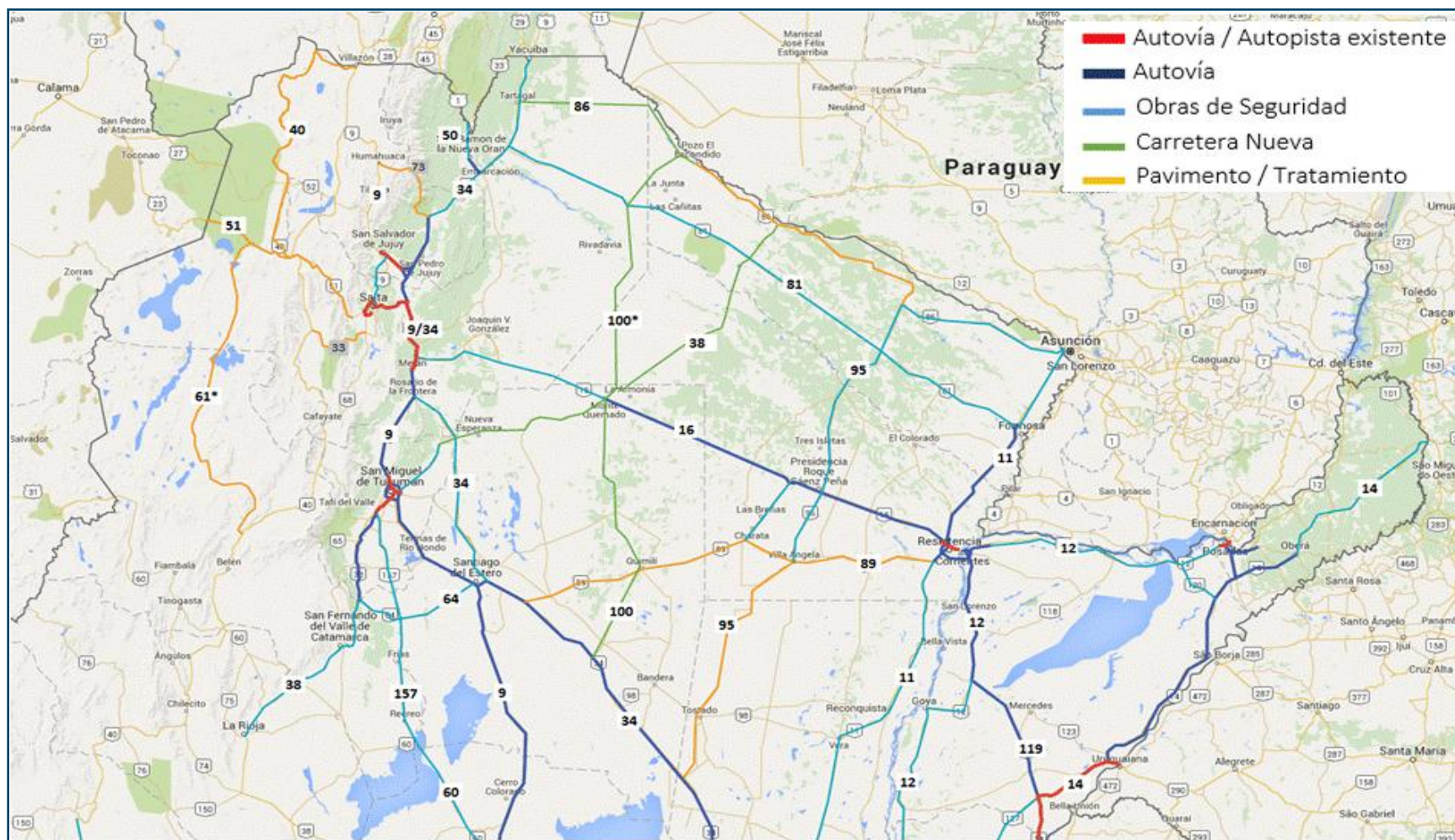


NOA: Axe Salta – Jujuy
and connectivity with
Bolivia and Chile.

National routes 9, 34,
68 and 51.



Infraestructura para el Desarrollo Económico - Vial



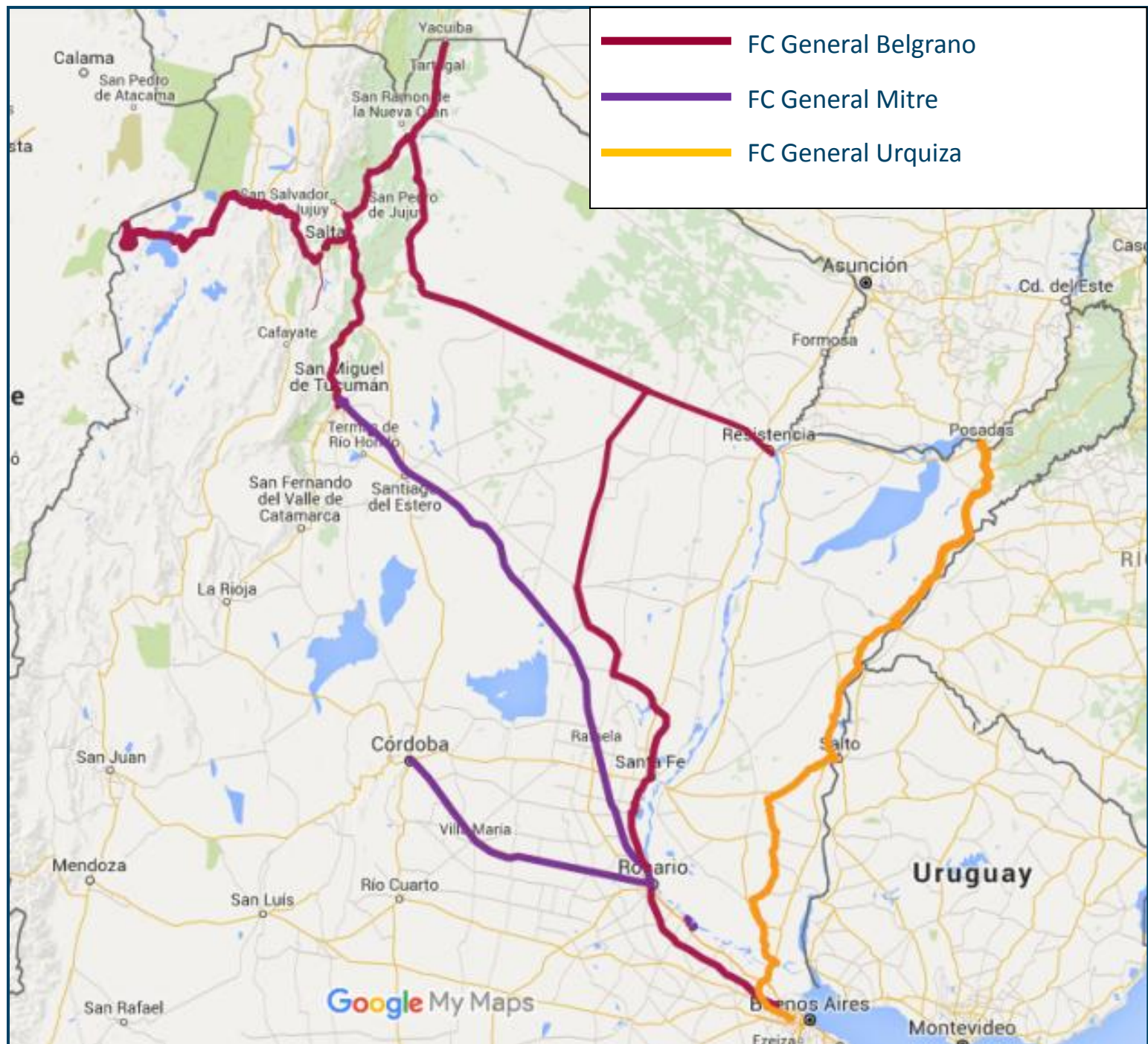
Infrastructure for the Economic Development - Railroad

Investment U\$\$ 5.550 millions - Aims

Integration of the railway system NOA/NEA. Centers of logistics Tucumán, Güemes and Playtime will answer to this criterion and not to competition between railway companies (FC Mitre, Belgrano, Urquiza) Renovation of more than 3.800 km from routes and improvement of 850 km from routes

Union of the north with Rosario's ports and Buenos Aires/La Plata

- Main rehabilitation FC Mitre from Tucumán to Rosario and Buenos Aires Bypass to Tucumán and improvement of the change Belgrano-Mitre
- FC Belgrano: (i) main agriculturalist to Rosario; the main mixed (ii) and his connection with the FC Mitre; the nourishing (iii) of the Hidrovía
- Recovery of the FC Urquiza Posadas - Buenos Aires
- Evaluation of international connections FC Belgrano



Infrastructure for the Economic Development - Airport



Infrastructure for the Economic Development - Railroad

LINE	Activity	Km	Million USD	Períod
FC Mitre	Tucumán – Rosario (Sta. Fe)	750	1.125	Sem. I 2016 a Sem. I 2018
FC Belgrano	JV González (Salta) – Avia Terai (Chaco)	400	550	Sem. I y II 2016
	Avia Terai (Chaco) – Barranqueras (Chaco)	200	250	Sem. I y II 2016
	Avia Terai (Chaco) – Rosario (Sta. Fe)	800	1.050	Sem. I y II 2016
	Salvador Mazza (Salta) – S. S. de Jujuy – Tucumán	1.250	1.625	Sem. II 2016 y Sem. I 2017
	Socompa (Salta) – Güemes (Salta)	150	200	Sem. II 2016 y Sem. I 2017
FC Urquiza	Posadas (Misiones) – Buenos Aires	1.000	550	Sem. I 2017 a Sem. II 2018
Subtotal		3.550	1.125	
Circunvalación ferroviaria a Tucumán			200	
TOTAL			5.550	

Infrastructure for the Economic Development - Airport

Investment U\$S 250 million

Aims:

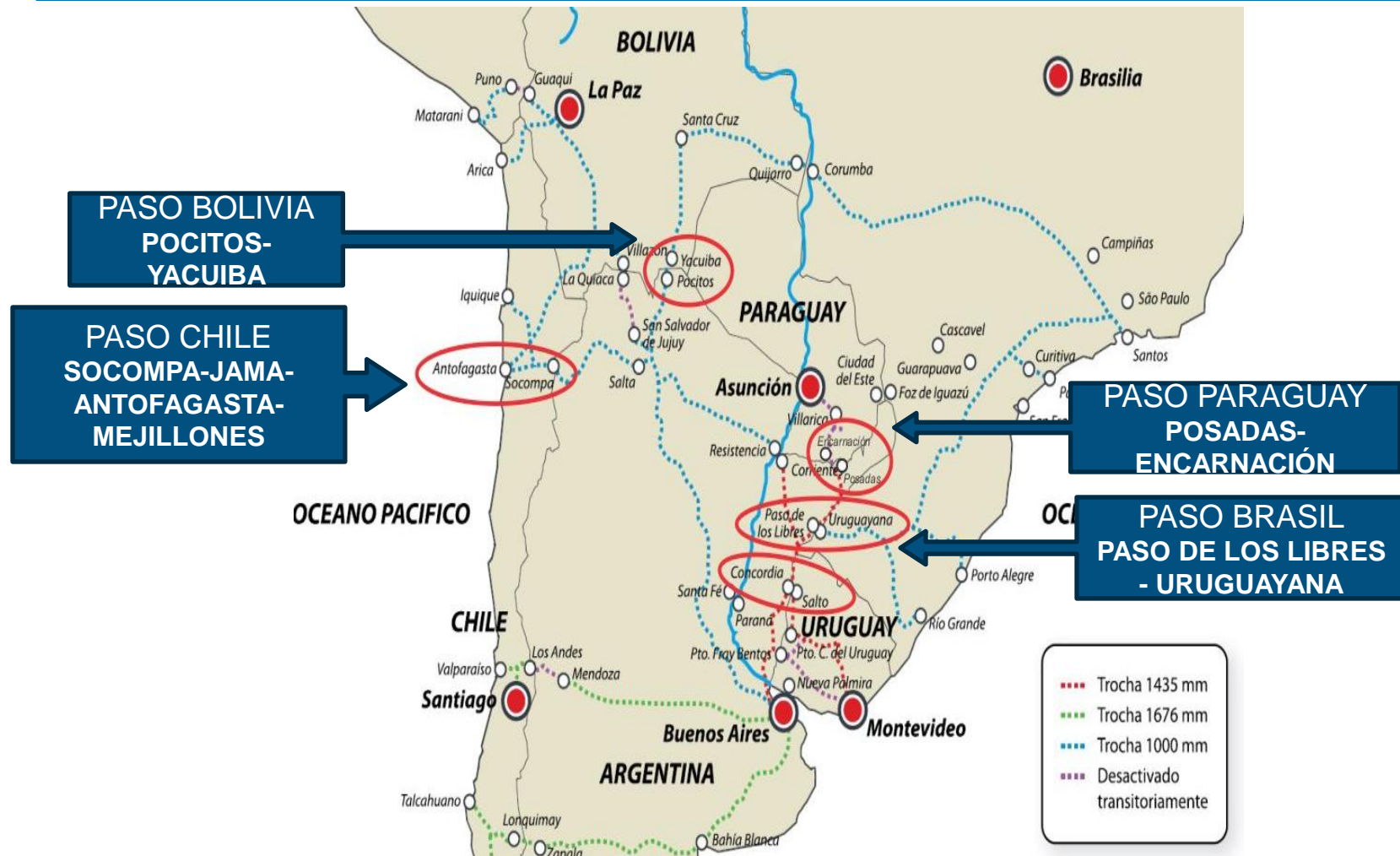
- The connectivity of the region promotes with the rest country and with bordering countries
- To promote the international tourism to the NEA
- To develop alternatives of export of load
- To improve the safety of air navigation

AEROPUERTO	INVERSIÓN (EN DÓLARES)
IGUAZÚ	70.000.000
RESISTENCIA	30.000.000
SALTA	60.000.000
TUCUMÁN	90.000.000
TOTAL	250.000.000

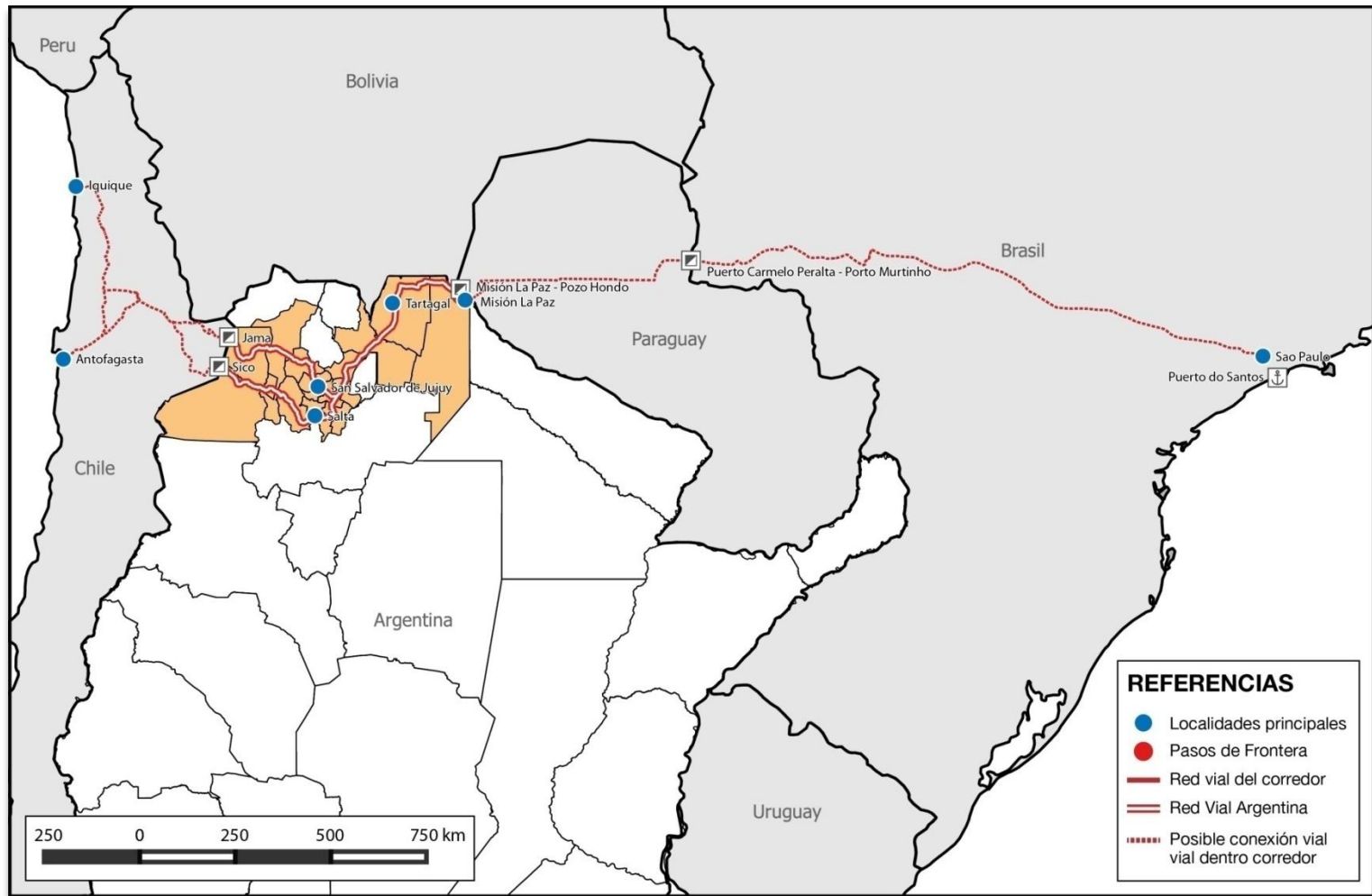
Infrastructure for the Economic Development - Airport

- **Iguazú's airport.** To promote the tourism and the connectivity of the NEA with Brazil, cost East of USA, Europe and Middle East.
- **Resistencia's airport.** To promote the exchange of air load and passengers between Brazil, east coast of USA and Europe.
- **Salta's airport.** Destined to develop the regional tourism, the air load and the passengers' connectivity with the coast west of the Pacific Ocean, Mexico and USA with connection to the Far East.
- **Tucumán airport.** Destined to develop alternatives of export of perishable, sensitive load and / or with great added value, with the possibility of connection of air load from the airports of Neuquén and / or General Roca.

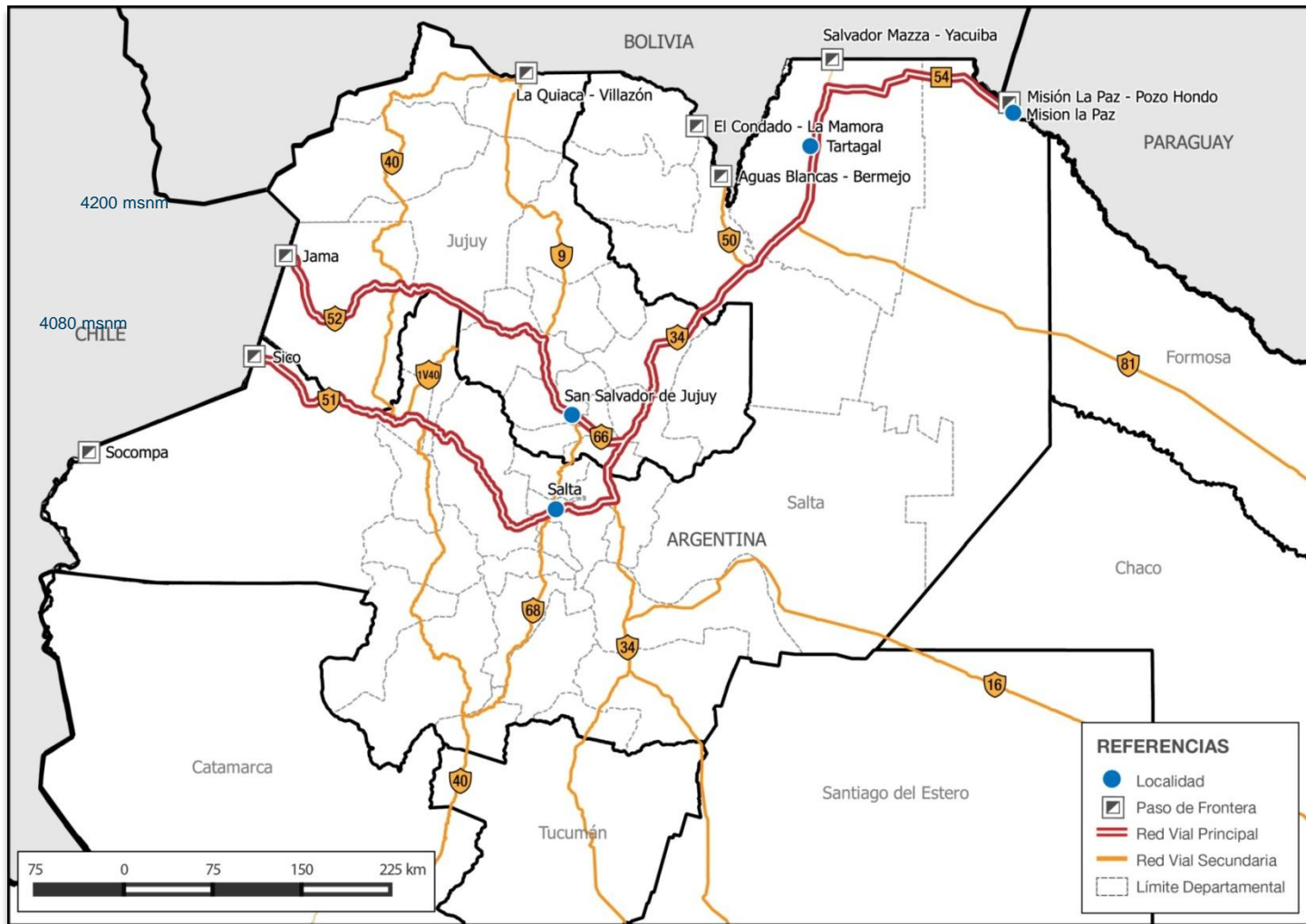
Infrastructure for the Economic Development - International Steps



North Bioceanic Corridor



North Bioceanic Corridor - Argentina Route



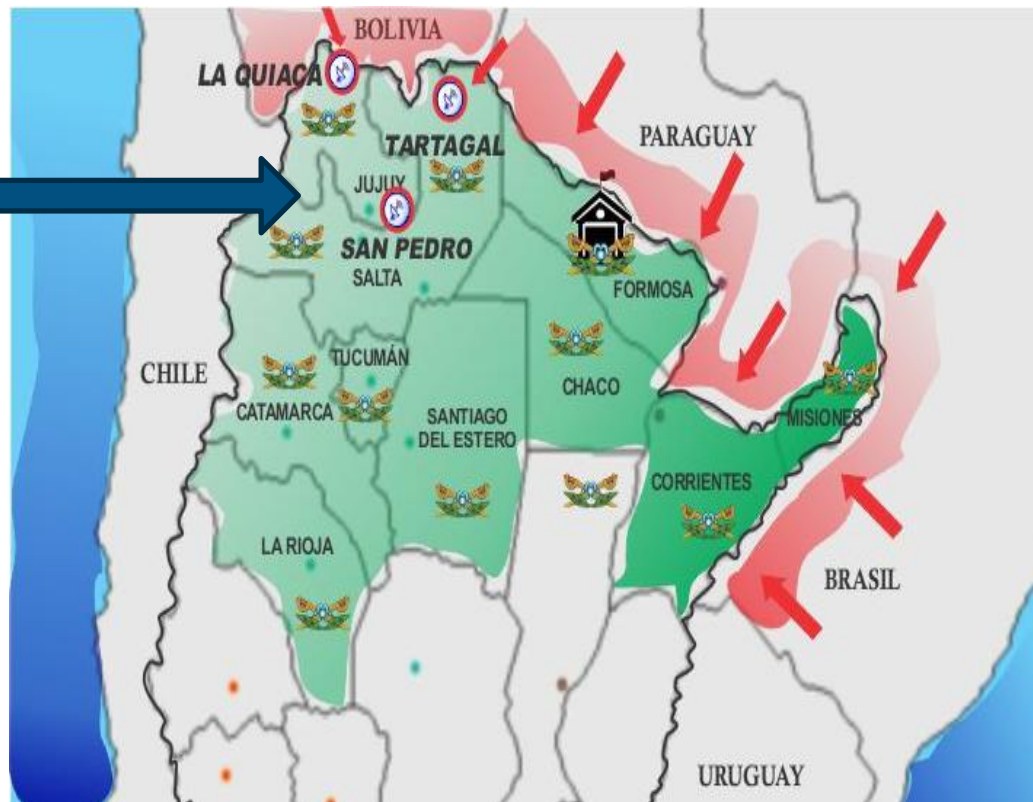
**Fight against
the drug trafficking**

Fights against the Drug trafficking - Actions

- **To equip police stations and police Delegations. To have presence in the zones most compromised with the drug trafficking.**
- Attends in the schools to avoid the sale of drugs to children and teenagers.
- **To equip and to improve the functioning of the Centers of Community Integration in the zones of minor resources.**
- **Activate the Primary care of Health, constructing and equipping the public hospitals and with the incorporation of more professionals of the health.**
- **Prevention and attention of the persons who suffer addictions. Containment to his families.**

Fight Against Drug Trafficking – Actions

To reinforce the presence of National Gendarmerie in the whole territory to prevent the drug trafficking from occupying the place of the State



Fight against the drug trafficking – Actions

- **To prevent the Drug trafficking from replacing to the State in some places.**
- **To create new Regional Headquarters of Gendarmerie in Formosa and to increase the gendarmes' quantity in the region**
- **To close the doors to the drug trafficking and the revenue of the drug prevents for: Tartagal, San Pedro and The Quiaca. .**

Plan Belgrano - Working Line

- For 2016 to be employed at the following strategic projects at coordination with the different departments:
- Definition and beginning of execution of a Cattle transverse Plan on the whole Argentine North. Production of diagnosis of the situation of the school infrastructure to arm a program that it provides with drinkable water, electricity and connectivity to all the schools of the Argentine North.
- Definition of a program of intervention in 10 areas of extreme poverty with works of infrastructure and actions for the economic and social development.

- Definition of a program of ambulant attention for poor municipalities of rural zones that it allows to realize trainings on promotion of the health and prevention of diseases and provides of lenses, dental protheses, etc.
- In agreement to the diagnosis realized in the locality.
- Immediate implementation of Programs of Food Security in localities focused of the Argentine North. Follow-up of the planning and execution of the construction or readequacy of Centers of The First Infancy and of establishments of pre-school. Identification of alternatives and constructive systems for social housing to dividing provincial experiences.

Plan Belgrano – Working Lines

- To arm and to coordinate three desks with civil servants of the different Departments for the follow-up of the goals and the identification and priorización of programs and projects. Table of Productive Development: Department of Production, Department of Agroindustry + UCAR, Department of Employment, Employment and National Health Service, Department of Science, Technology and Productive Innovation, Department of Environment and Sustainable Development Table of Social Development: Department of Social Development, Department of Health, Department of Education and Sports, Department of Employment, Employment and National Health Service, Department of Modernization, Department of the Interior, Public Works and Housing Table of Infrastructure: Department of Interior, Public Works and Housing, Department of Transport, Department of Employment,

The Change comes to Argentina's North with the Plan Belgrano

- At present the opportunities to attract investments in the northern part Argentinian are related to the existence of natural resources of high profitability.

- **To change this reality implies generating perspectives of medium and long term and stimulating a strategy of stimulus to the territorial and productive development that he contributes to the eradication of the poverty and the mitigation of the inequity.**

It needs of the coordinated work of the set of areas of the national Government together with the governments and local actors.

- The Plan Belgrano must appear as a process of change that will be achieved across the work in actors' network.

- It's indispensable being creative, innovative and transverse in the design of solutions.

- **The Plan Belgrano must contribute to the competitiveness of the Argentine North, understood as the capacity of the territory to achieve the development supported in a context of included competition.**

Muchas gracias